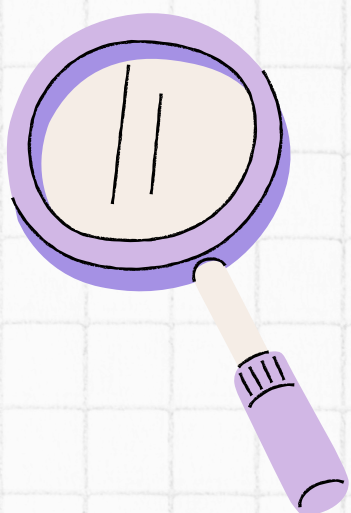
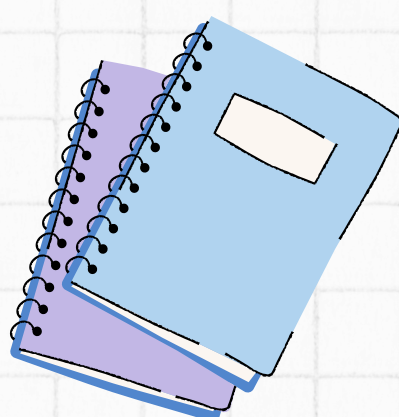




HOW TO DESCRIBE A DISTRIBUTION

01 Shape

describe whether the distribution is unimodal, bimodal, multimodal, symmetric, or skewed

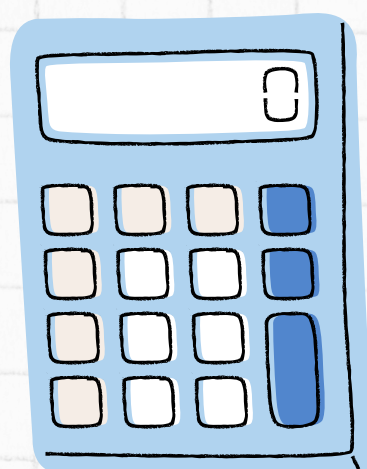


02 Center

identify the central value of the distribution, typically using the median or mean

03 Spread

describe the variability or dispersion in the data, using measures like range, IQR, and standard deviation



04 Unusual features

- note gaps, outliers, and other anomalies
- try to decide what you will do with those anomalies, as deleting them is not always the right option.



Check more on:
www.majanalytics.com